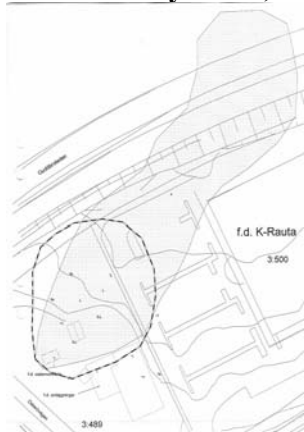




Ecocare Sweden AB

SPIMFAB Söderbymalm, Haninge



Contamination

Contamination in the groundwater plume and the saturated soil layer.

Alifates

Aromates

BTEX

Project specification

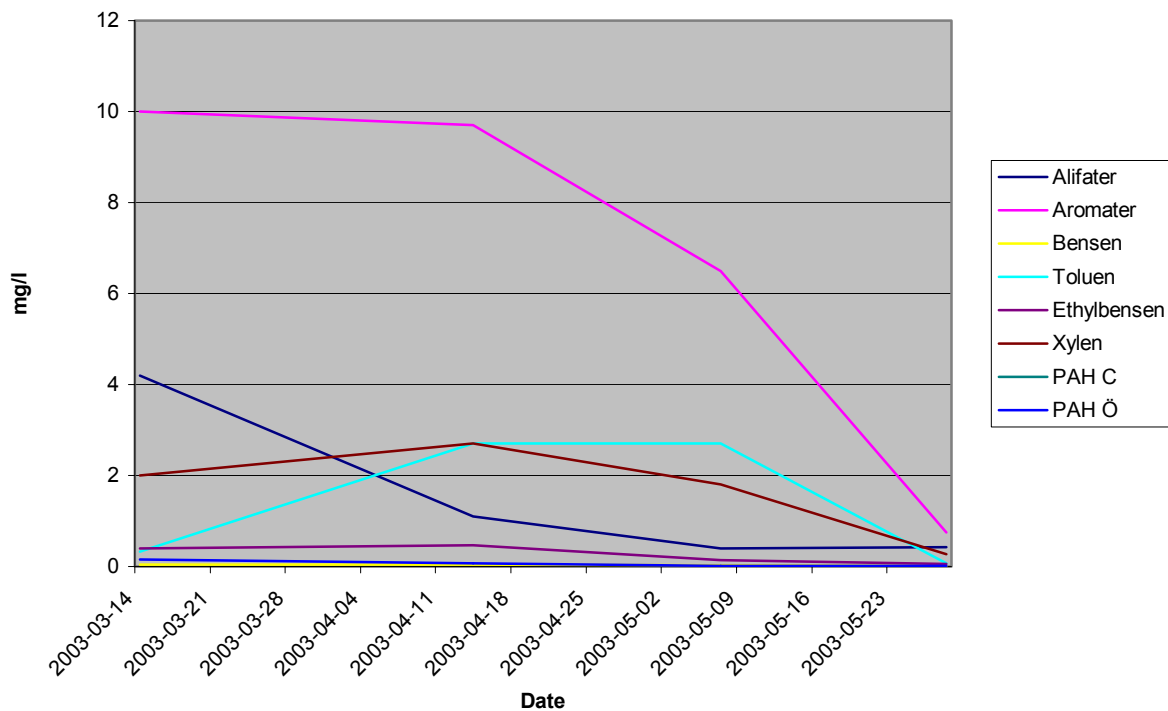
After previously completed soil remediation projects, a follow-up control of the the site did show significant remaining contamination of the groundwater plume and the saturated soil layer. EcoCare was contracted to do a final clean up of the area.

Contamination consists of Alifates and Aromates together with BTEX. The groundwater level was on 3,5 – 5m depth on clay.

Project execution

Infiltration and extraction wells were installed to re-circulate the existing groundwater volume within the remediation site. The groundwater is led from extraction wells downstream via the bioreactor and re-circulated into to the water plume upstream. When the water has passed the bioreactor it is enriched with oxygen, nutrient and microbes. The contamination level is constantly reduced when passing the bioreactor and also through a continuous remediation process in the soil. The soil layer is also aerated through infiltration with compressed air into perforated pipes.

After continuous control and laboratory tests of the water it was confirmed that the contamination had been reduced to levels far below the target values of the project. The site was reported for the commissioner's control in June -03.


EC2/JWK06 Provtagning

EC5 / MB 10p
